



Company Profile

Content

SafeDX Introduction

Inovative technology

Services

References

Future project

The logo for SafeDX, featuring the text "SafeDX" in white on an orange circular background. The "X" is stylized with a white outline.

SafeDX



SafeDX Introduction

The logo for SafeDX, featuring the word "Safe" in orange and "DX" in grey, with a grey padlock icon above the "X".

SafeDX

a joint venture between

The logo for FOXCONN, featuring the word "FOXCONN" in blue, with a registered trademark symbol (®) to the right.

FOXCONN® and

The logo for KKCG, featuring a black circle with a white square and a black arrow pointing left, followed by the letters "KKCG" in black.

KKCG

The logo for SafeDX, featuring the word "SafeDX" in white, with a white padlock icon above the "X", set against an orange circular background.

SafeDX

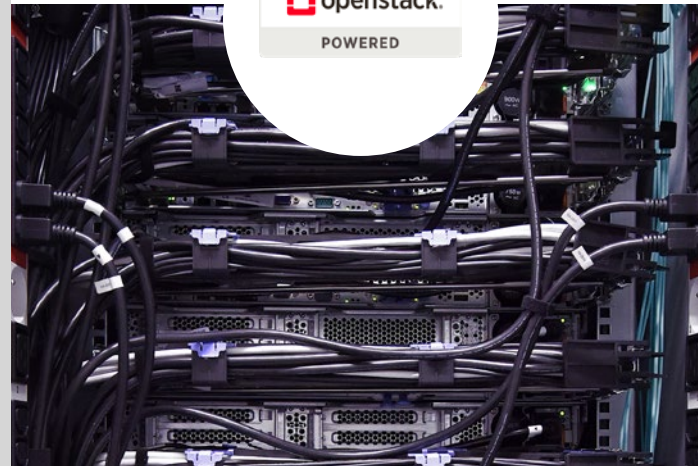
Modern Data Center

Secure, reliable,
energy efficient



Innovations

IT Infrastructure,
Services



International Reach

Bridge between
East and West



SafeDX

Prague Data Center Overview



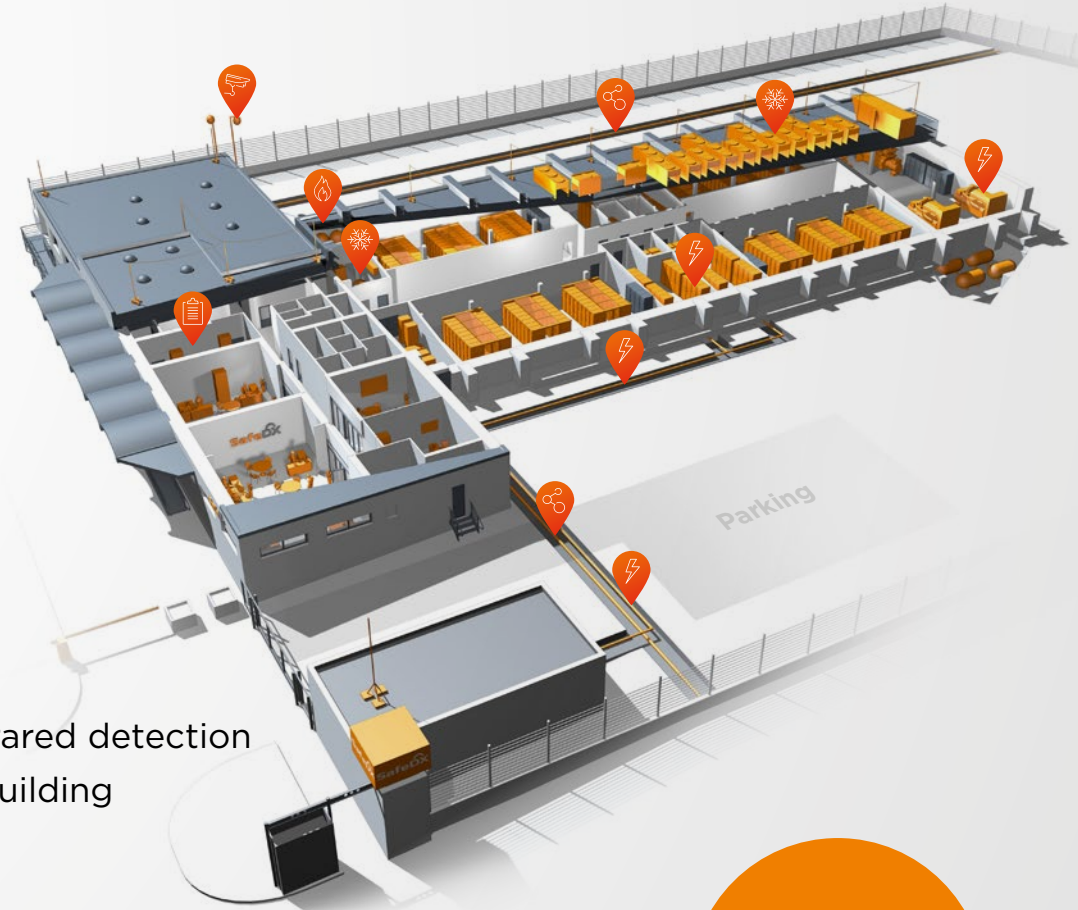
Key features

- Site: Prague, Czech Republic
- Built according to Tier III standard
- RC3 security according to EN 1627:2011 standard
- Total capacity: 200+ racks
- 4 independent data halls
- 12 PODs (cold aisles)
- Floor bearing capacity: 2000 kg/1 m²
- Environmentally friendly building (PUE 1,35)
- 99.982% planned availability



Facility security

- Security perimeter - 3.3m fence with barbed wire and infrared detection
- Surveillance camera system both inside and outside the building
- Section doors secured using PIN and biometric readers
- Building intrusion detection systems
- 24/7 physical protection by a professional security agency



Prague Data Center Overview



Cooling

- N+1 redundancy
- Twin floors and covered cold aisles
- Relative humidity: 0% to 60%
- Temperature: 20-24°C
- Unit power up to 12 kW/rack
- DX direct cooling
- Free cooling on days with lower outdoor temperatures



Data connectivity

- CETIN, ČDT and T-Mobile redundant optical connectivity
- Two independent internet nodes connectivity - CeColo and TTC
- IP interconnect with COGENT and CETIN
- DDoS protection of the data center connectivity
- Connection provider neutrality



Prague Data Center Overview



Power supply

- Multi-Feed – 4 independent power supply branches with separate backup UPSs and diesel generators to ensure uninterrupted operations
- Total allocated power 3 MW
- The data center is powered from two directions
- 4x 1250-kVA transformers
- UPS performance 4x 600 kW
- 4x 1206-kVA backup generators covering 12 hours of operation for the entire data center



Fireproofing

- Electronic fire protection system
- Optical/thermal fire sensors
- Divided in 6 fire sections and 8 extinguishing sections
- Laser-based smoke suction detectors
- Stable fire-extinguishing system based on inert gas
- 60-minute fire resistance of each section



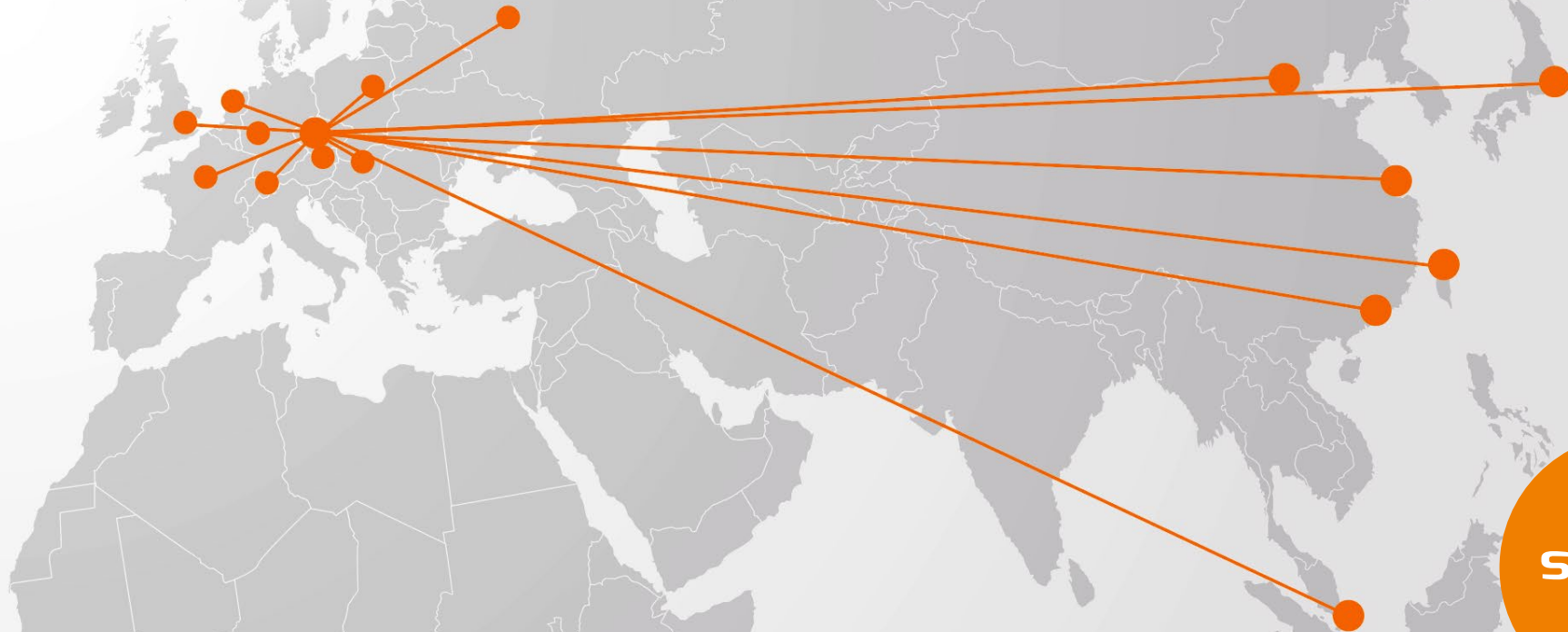
SafeDX as Intel EMEA RSD Demo Zone

- SafeDX deploying a **cluster of Intel Rack Scale Design** racks using Foxconn HW in Prague DC
- Adopting **Software-defined Data Center architecture**
- Looking for partners that can benefit from this innovation
- **Wholesale Cloud Services** offering

A 3D rendering of the SafeDX logo mounted on a light-colored building facade. The word 'safe' is in a lowercase, orange, sans-serif font, while 'DX' is in a larger, dark blue, uppercase, sans-serif font. The letters have a slight shadow, giving them a three-dimensional appearance.A circular orange logo featuring the SafeDX brand name. The word 'SafeDX' is in white, with the 'DX' in a bold, sans-serif font. A small white icon of a padlock with a keyhole is positioned above the 'X'.

Connectivity Services to Asia

- Connection established from Prague DC to Hong Kong
- Cooperation with China Telecom and Foxconn for coverage of Asian locations
- Local DC connectivity sharing DataSpring architecture



Wholesale Cloud Services

Value Proposition to Partners

- Competitive price/performance ratio
- Quick Time to market
- Flexibility

Service Options

- Rack housing
- Connectivity
- Dedicated physical servers
- OpenStack platform to provision virtual network, servers and storage
- Customisation of HW configuration (RAM, HDD, GPU expansion)

SafeDX



Inovative technology

Foxconn® R-5211 2U Purley Server

System

Chassis	2U server
Dimensions	711x446x87mm
Max Weight	30 kg

Storage

Front	24x 2.5" SATA/SASHDD 24x NVME U.2 SSD
Rear	2x 2.5" SATA/SAS/NVME
Internal	2x SATA M.2 2280 slot

Expandability

PCIe slots	1xLow Profile,PCIe3.0 x16 2xFHFL, PCIe 3.0 x16 2xFHFL, PCIe 3.0 x8 2xSATA M.2 2280
-------------------	---------------------------------------------------------------------------------------------

Processor/Chipset

Processor	Intel Xeon Gold 5120
Socket	LGA 3647
Design Power	205 W Max
Chipset	Intel PCH C622

Memory

Quantity	24x DIMM slots
Type/Speed	DIMM DDR4-2666MHz/ 24000MHz
Capacity	Up to 768 GB
ECC	Support

Networking

Main	2x1G RJ45; 2x10G SFP+. Support PXE, WOL. Support shared NIC
IPMI	1x Independent RJ45, 1G

BIOS and Firmware

BIOS	Customized AMI UEFI BIOS
BMC	IPMI 2.0, Support Virtual Media and KVM over IP functions. Monitor input voltage of CPU/DIMM/chipset, fan speed and temperatures of system/CPU/DIMM
TPM	Support TPM 2.0 on board solution

Power

Type	HVDC PSU, 100-240VAC 50/60Hz, &240VDC support PMBus 1.2
Rating	550W/800W/1300W

The logo for SafeDX, featuring the text "SafeDX" in white on an orange circular background. The "X" is stylized with a white outline.

Intel® Rack Scale Design v2.2

Advantages

- Single source of data for servers monitoring
- Rack based data for asset management
- Real-time data for cooling adjustment

PSME

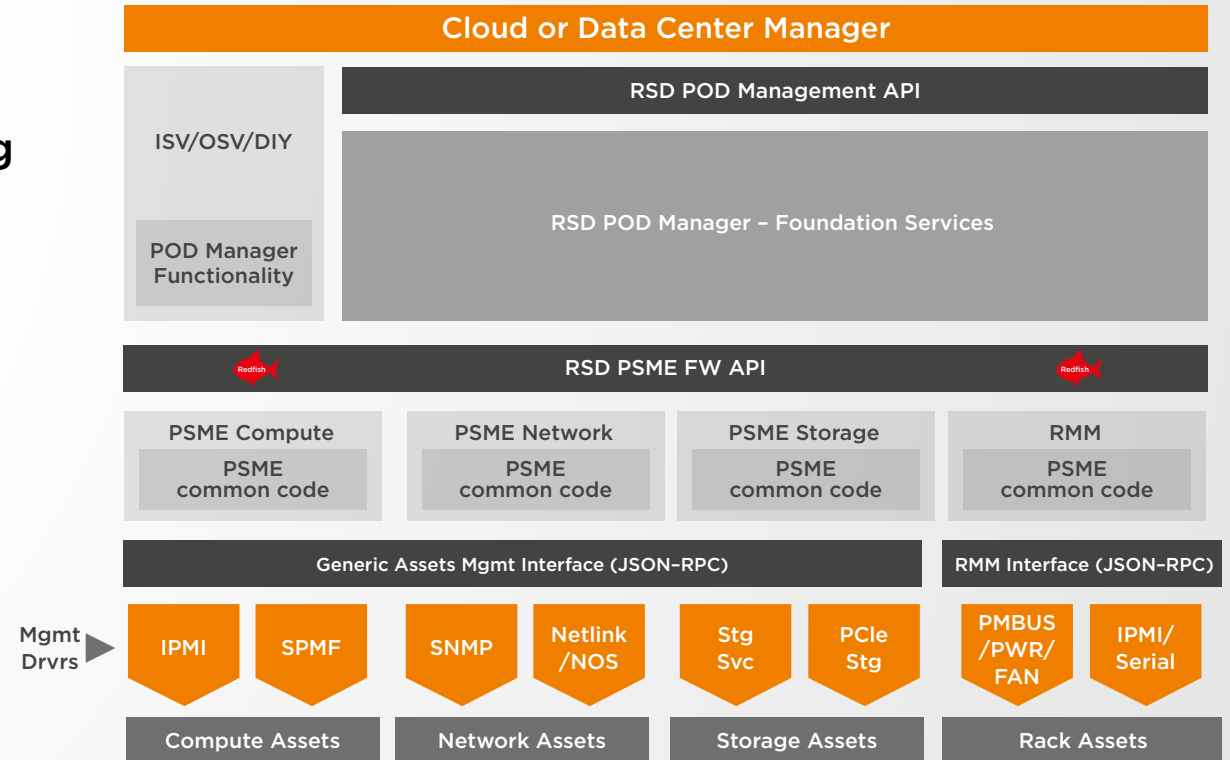
Pooled System Management Engine) fully describes all disaggregated components in its domain.

RMM

Describes Rack Level specific data for Power & Thermal Zones.

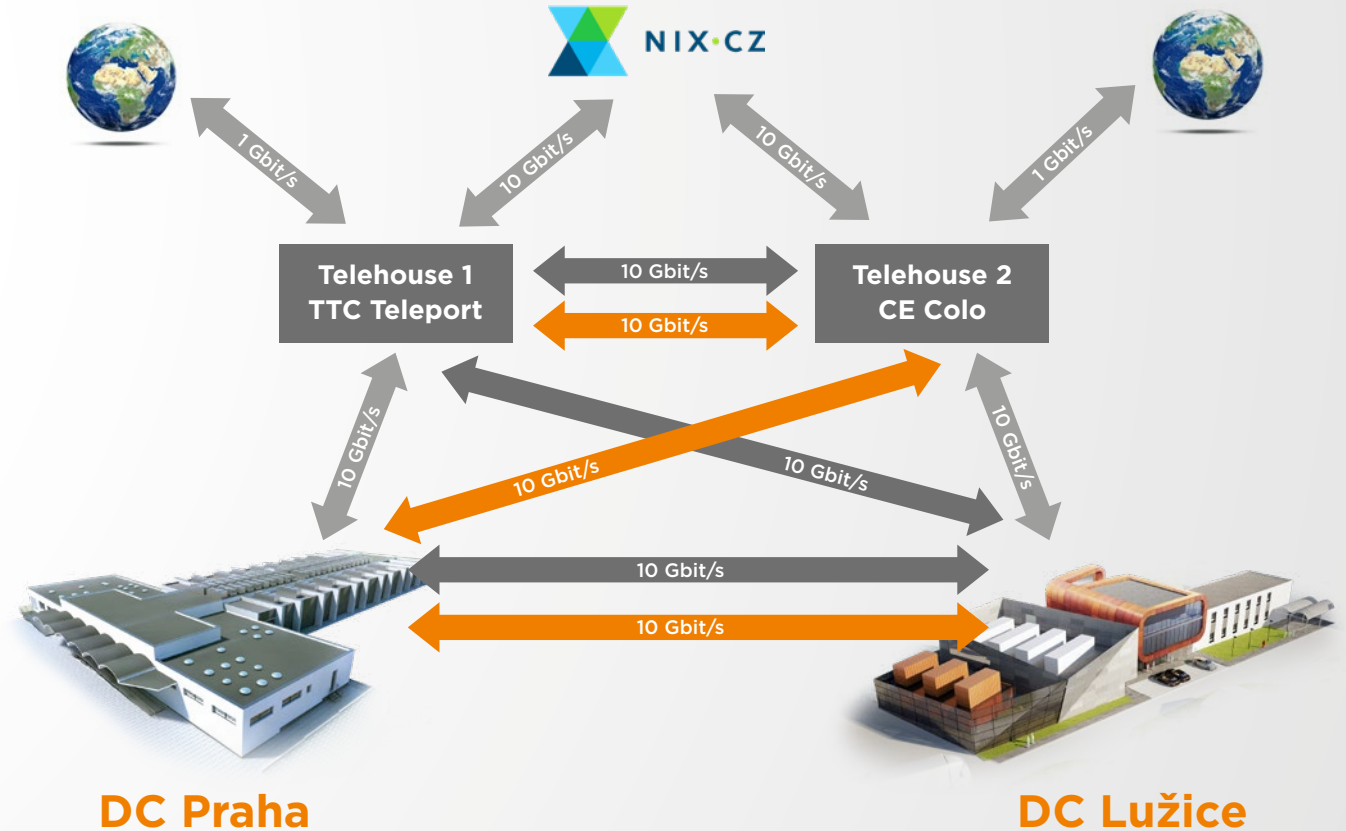
POD Manager

assembles and configures pooled assets within a POD. Racks drawers, sleds, components and infrastructure.



Connectivity

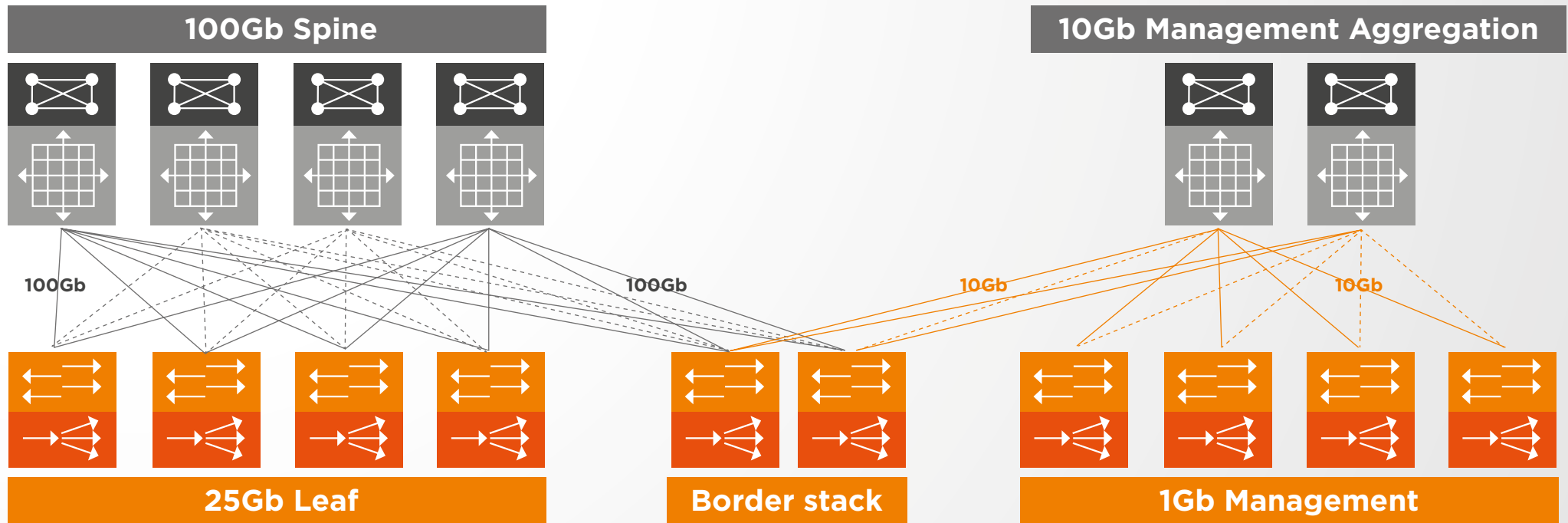
- High availability of local and international connectivity. Georedundancy, carrier neutrality.
- 3 physically independent fiber pathways into the building
- Provider of public IP addresses



SafeDX

LAN Topology

- Fast network with Spine-leaf architecture allows scalability and readiness for High Performance Computing
- Independent network for servers management and provisioning



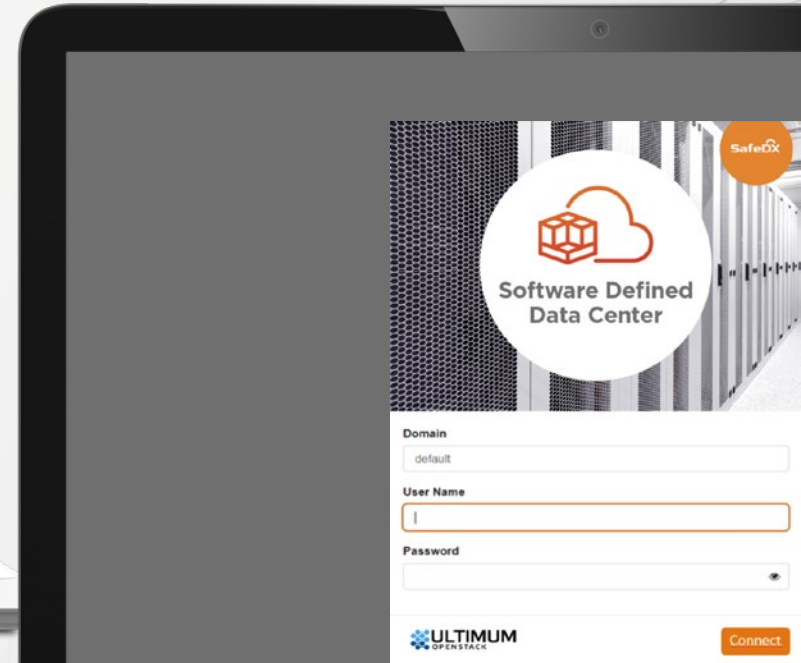
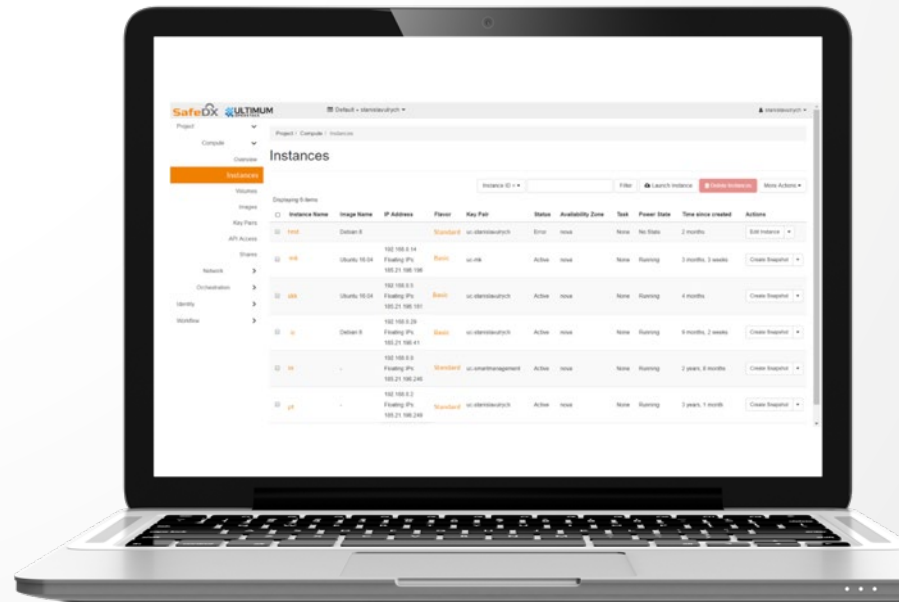
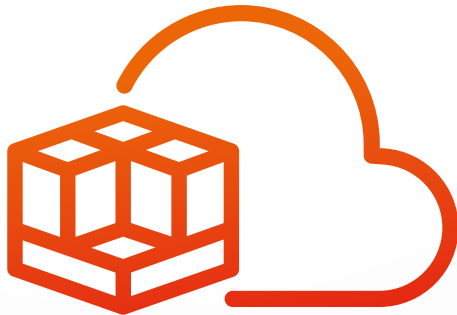


SafeDX Services



Software Defined Data Center

- Brings benefits of Software Defined Infrastructure
- Not chained by licensing building OpenSystems environment
- Uses Intel Xeon Gold Scalable processors to cover performance-sensitive requirements
- Large scale, wholesale cloud concept



OpenStack platform distribution

Platform certified by OpenStack Foundation*

- OpenStack Powered Platform 2017.09 certification
- Guarantee of compatibility with other certified platforms
- Verified security patches
- Verified OpenStack functionality completeness
- OpenStack source code contribution**
- OpenStack release used: Queens

Active contribution to Debian packaging

- <https://ultimum.io/services/repositories/>



*<https://www.openstack.org/marketplace/distros/distribution/ultimum-technologies-sro/ultimum-openstack>

**<http://stackalytics.com/?release=queens&metric=bpd>

Used OpenStack projects

Orchestration

Heat

Orchestration
Service

Mistral

Workflow
Service

Watcher

Optimization
Service

Murano

Application
catalogue

Verification

Congress

Policy

Vitrage

Root Cause
Analysis

Containers

Zun

Policy

Magnum

Container
orchestrat.

Infrastructure

Nova

Compute
Service

Neutron

Software define
network

Cinder

Block
storage

Manila

Shared
Filesystems

Swift

Object
Storage

Ironic

Bare met.
server prov.

Designate

DNS as a service

Shared Services

Keystone

Identity Service

Glance

Image service / sna-
pshot

Ceilometer

Usage data &
reporting

Horizon

Web dashboard

Monasca

Monasca
Monitoring
as a service

Freezer

Backup as a service

Services



Virtual servers and containers

- Large selection of supported OS including Windows Server, CentOS, Ubuntu - 3 versions back
- Docker containers



Services



Software Defined Storage

- File Storage
- Block Storage
- Distributed storage space for higher security and performance
- Data blocks triplication using CEPH



SafeDX

Services



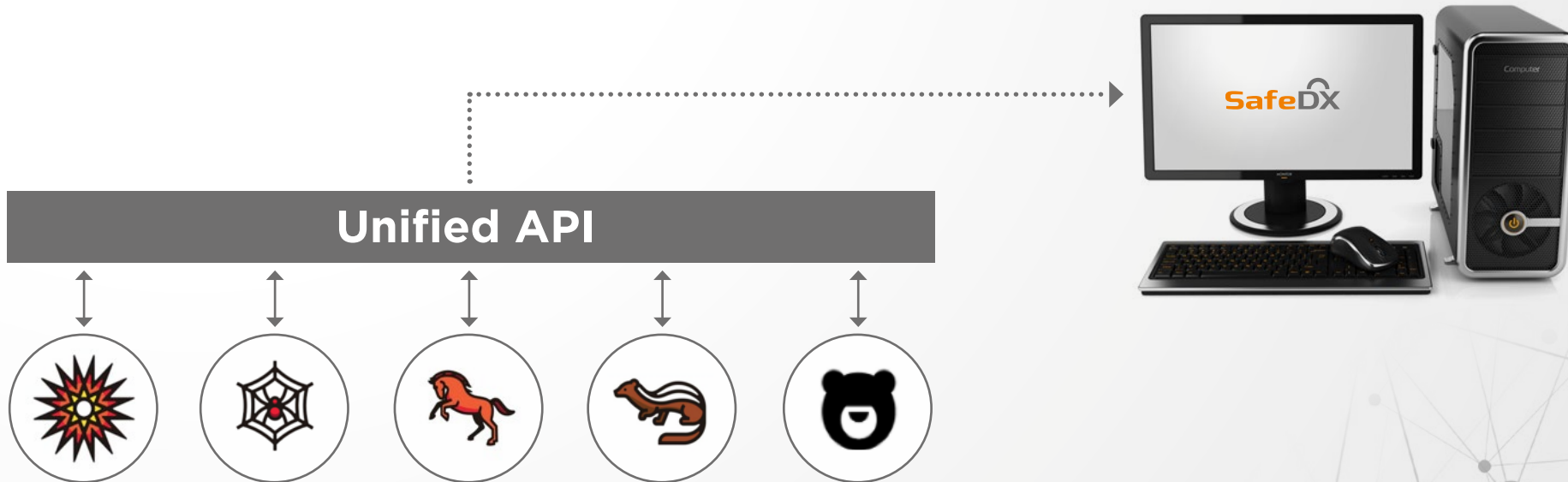
Software Defined Networking

- vFW (iptables)
- VPN (strongswan)
- Load Balancer (haproxy)
- VRouters
- Floating IP
- Multiple private IP ranges

Benefits

Flexibility

- Automation of environment creation using pre-defined orchestration templates.
- Wide range of integration and customization options
- Unified API and user environment interface



Benefits

High Performance and Capacity

- Service runs on a homogenous cluster containing 250+ physical servers with **7000+ physical cores, 90+ TB RAM and Petabytes of usable storage space**
- Powered by Intel Xeon Gold Scalable processors with AVX-512 instruction set supporting up to **2x FLOPS per core per cycle**
- Performance boost options using add-in datacenter GPUs.
- Expansion options for extreme capacity storage – up to dozens of Petabytes.



SafeDX

Service Models

	Private Cloud*	Public Cloud Dedicated*	Public Cloud Shared**
Service management			
User account management	■	■	■
User access management	■	■	■
User account management	■	■	■
User access management	■	■	■
User account management	■	■	■
User access management	■	■	■
User account management	■	■	■
User access management	■	■	■
Performance			
vCPU performance guarantee	yes	yes	no
IOPS guarantee	yes	no	no
Customization			
User authentication with customer LDAP or AD	■	■	■
Whitelabeling (dashboard, login portal)	□	■	■
User authentication with customer LDAP or AD	■	■	■
Whitelabeling (dashboard, login portal)	□	■	■
User authentication with customer LDAP or AD	■	■	■
Whitelabeling (dashboard, login portal)	□	■	■
Terms and Conditions			
Minimal time commitment	yes	yes	no
Pay-as-you-go (On-Demand)	no	no	yes

■ Client

■ SafeDX

□ Optional

* Project pricing

** Standard price list



SafeDX

Rack Housing

- **Secure rack housing in a state of the art Tier III compliant, provider neutral data center in Prague (99,982% DC availability), trusted by renown foreign clients working in the banking area.**
- **Highly reliable N+1 redundant non-IT technologies, 4x data halls and a total capacity of 192 racks.**
- **Premium lockable Conteg 48U 19” racks in 600x1200mm or 800x1200mm width. Racks installed in lockable (personal entry card) PODs with cold and warm aisles. Power from 4KW as standard, and up to 11KW per rack.**



Martin Smekal

E: martin.smekal@safedx.eu

T: +420 731 627 230

Daniel Procházka

E: daniel.prochazka@safedx.eu

T: +420 733 593 359